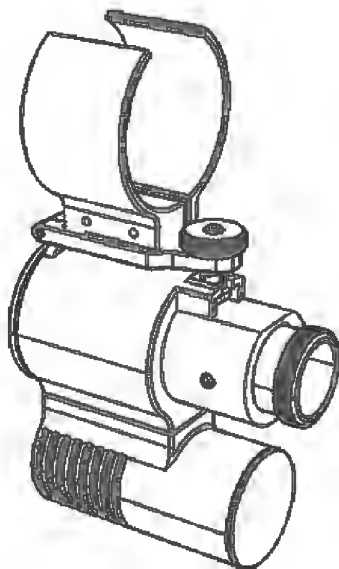




**MANUAL**

# **ASAFA SHOT VIEW**

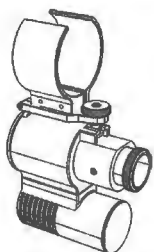
**ASAFA 15-5VE**



## Content

Box contents	3
Mounting the sensor	4~5
Software	6~14
Warrenty & Care & Specifications	15

## Delivery set



1



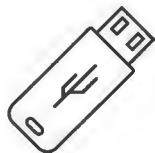
2



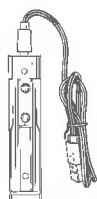
3



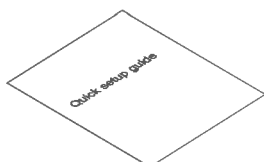
4



5



6



7

Please check and identify  
supplied accessories



1. Optical sensor 15-5VE



2. Screwdriver 1.27mm



3. Screwdriver 1.50mm



4. Air-pistol clamp



5. Flash drive with software and videos



6. Battery charger



7. Quick setup guide



## Optical sensor 15-5VE

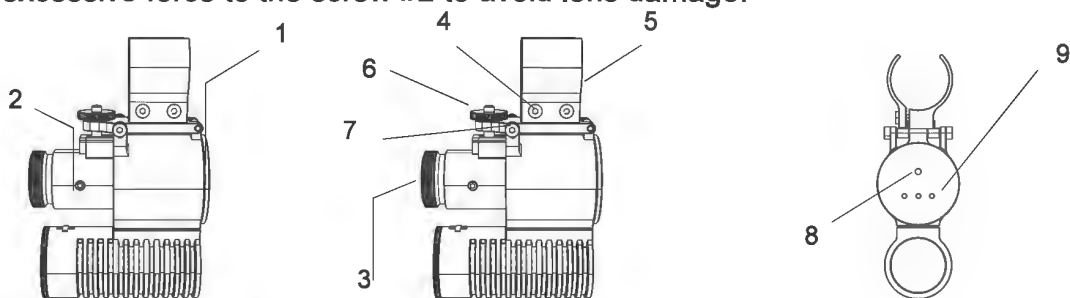
This sensor is equipped with an adjustable lens which will allow you to use it at different distances (2.5m and higher).

Before mounting the sensor on the rifle or pistol, adjust the focus ring to the real distance between shooter's position and the target (in meters).

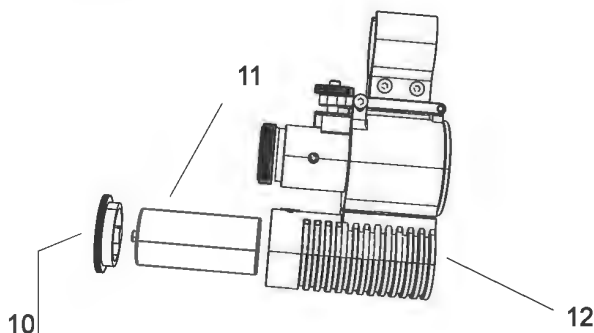
When switching between distances of 2.5m, 10m, and 50m, the shooter needs to adjust the focus.

Loosen the screw #2 and turn the lens #3 focus ring. To tighten the screw #2 when the image in PC is clear

\*Avoid applying excessive force to the screw #2 to avoid lens damage.



- 1. 15-5VE Optical Sensor
- 2. Lens tightening screw
- 3. Lens
- 4. Clamp screw
- 5. Clamp
- 6. up-down screw
- 7. Fix screw
- 8. Power button
- 9. LED indicator
- 10. Battery box cover
- 11. 16340 battery
- 12. Battery box



Loosen the screw #7, and turn the up-down screw #6. To fix screw #7 when the rod dot is in the big circle in PC software. Please refer Page: 9.

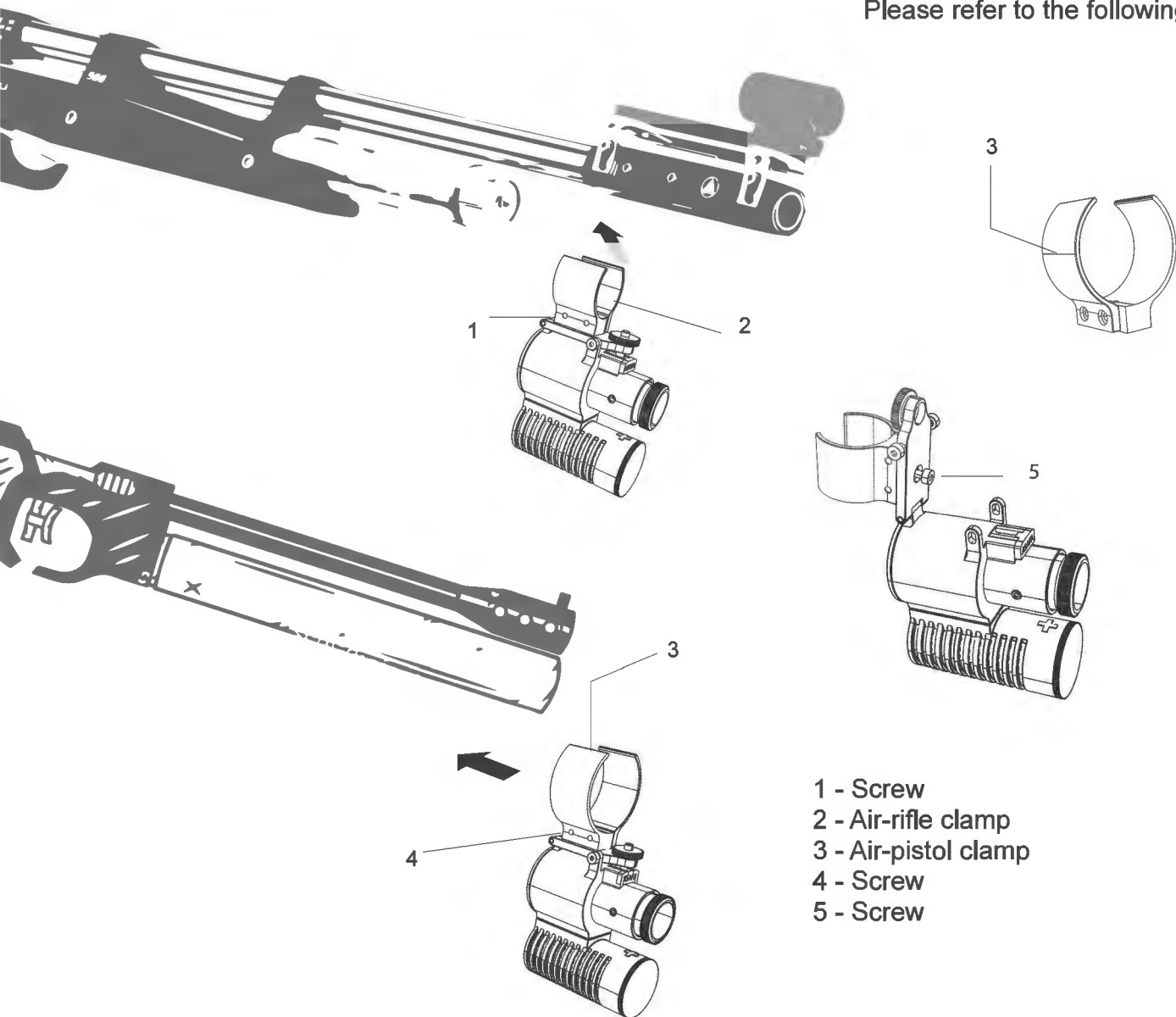
To switch power button #8, the LED indicator will show the battery power level. Three LED lights show the battery power level above: 25%-50%-75%

Turn the battery box cover #10, put battery #11 in. Please notice the battery #11 positive + facing out.

Attention! When not in use for long periods: Remove batteries. Should be recharged every 3 months.

## Mounting the optical sensor on the rifle or pistol

Please refer to the following scheme.



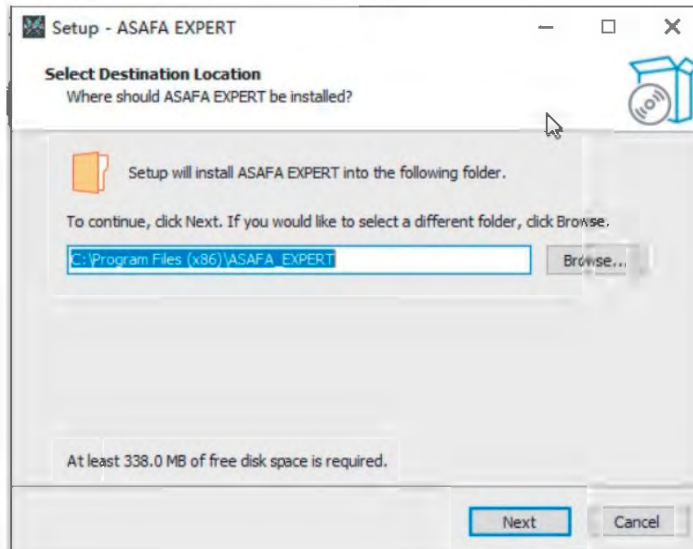
Loosen screw #1, and mount the air-rifle clamp #2 in the air-rifle tube. Fix screw #1.

Loosen screw #5, and change air-rifle clamp #2 to air-pistol clamp #3.

Loosen screw #4, and mount the air-pistol clamp #3 in the air-pistol air cylinder. Fix screw #1.

## Getting started

Before the initial setup you need to install the ASafa software.  
Insert the supplied U-flash drive into the USB port of your computer.



All necessary software can be found on the supplied flash drive, but you can always download the latest version of the software and manuals at: <https://www.asafa-tech.com>

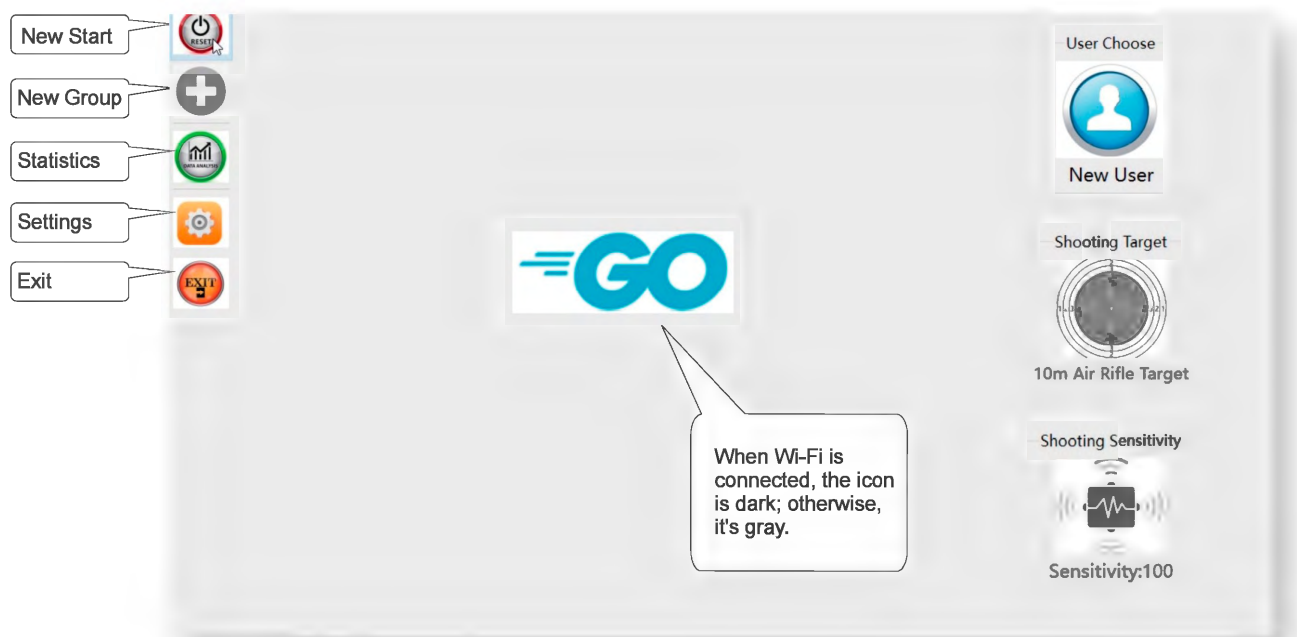
## Wifi Connection to the trainer

The sensor creates an open Wi-Fi network with a name similar to: ASAF\_XXXXX  
(exact network name is written on the sensor).

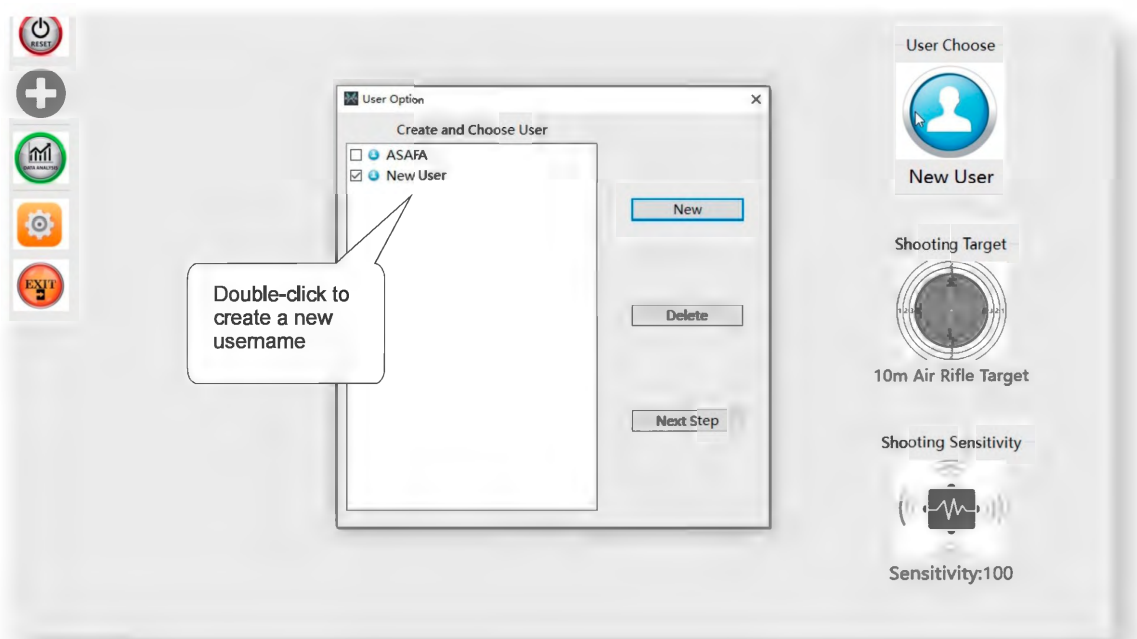
Turn on the optical sensor by pressing the power button. The LED light below the power button should be on. Turn on Wi-Fi on your PC and connect it to the ASafa\_XXXXX network.

The Wi-Fi signal becomes available approximately 20 seconds after power-on.

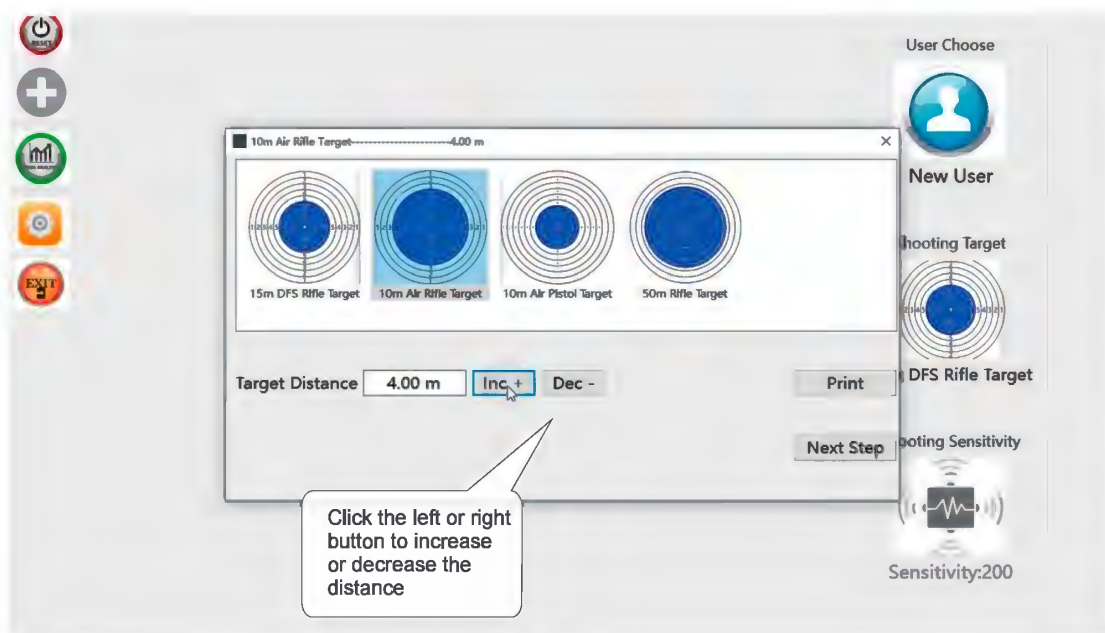
## Main screen



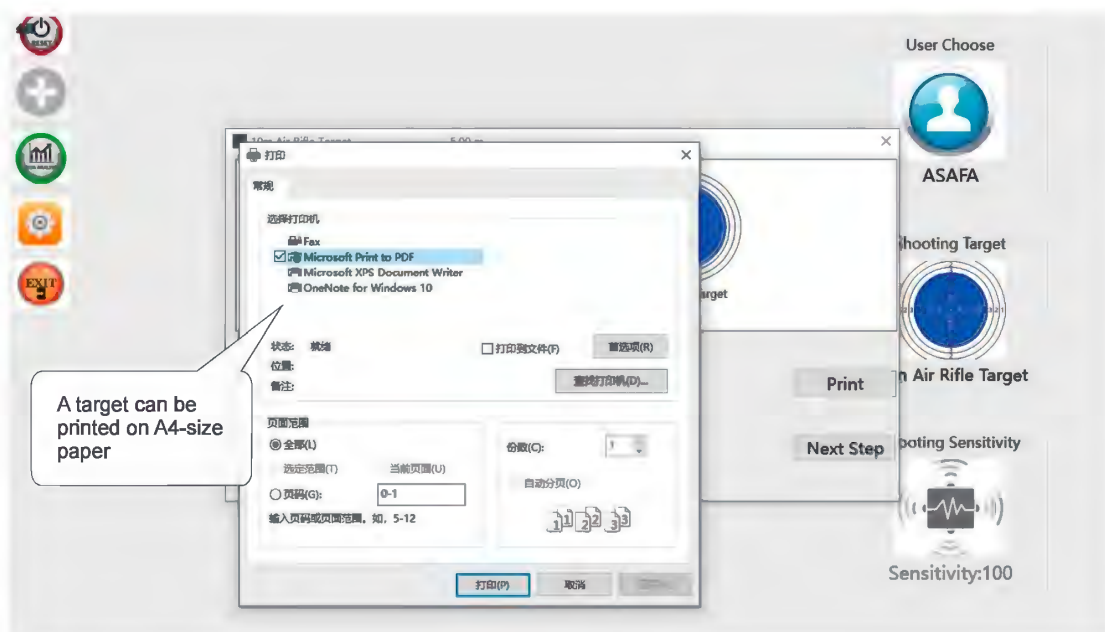
## User Option



## Target Distance

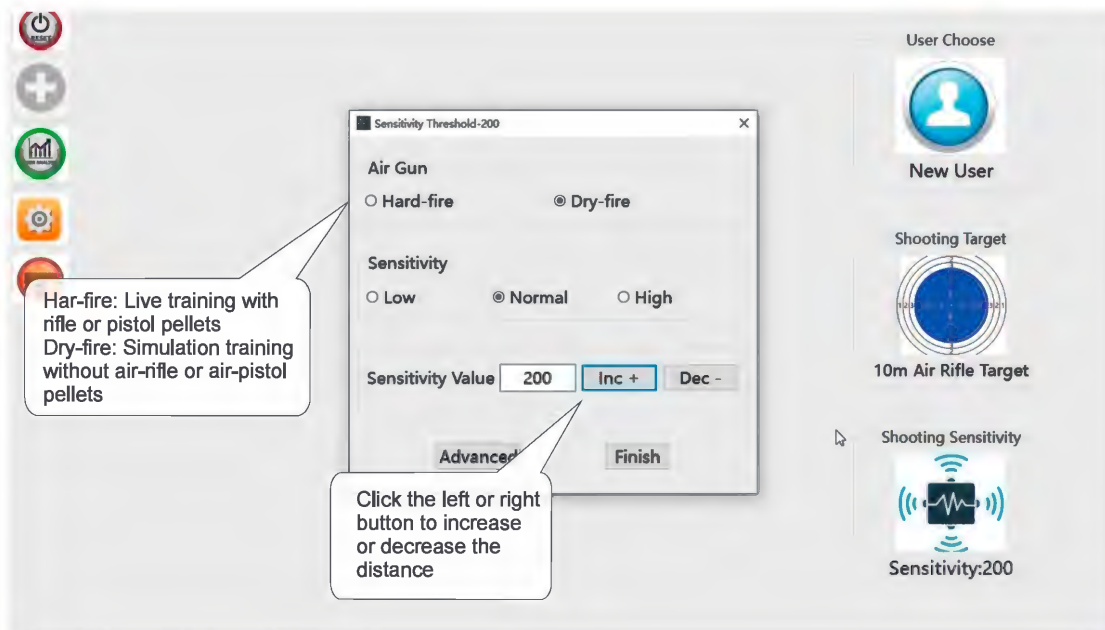


## Print Target

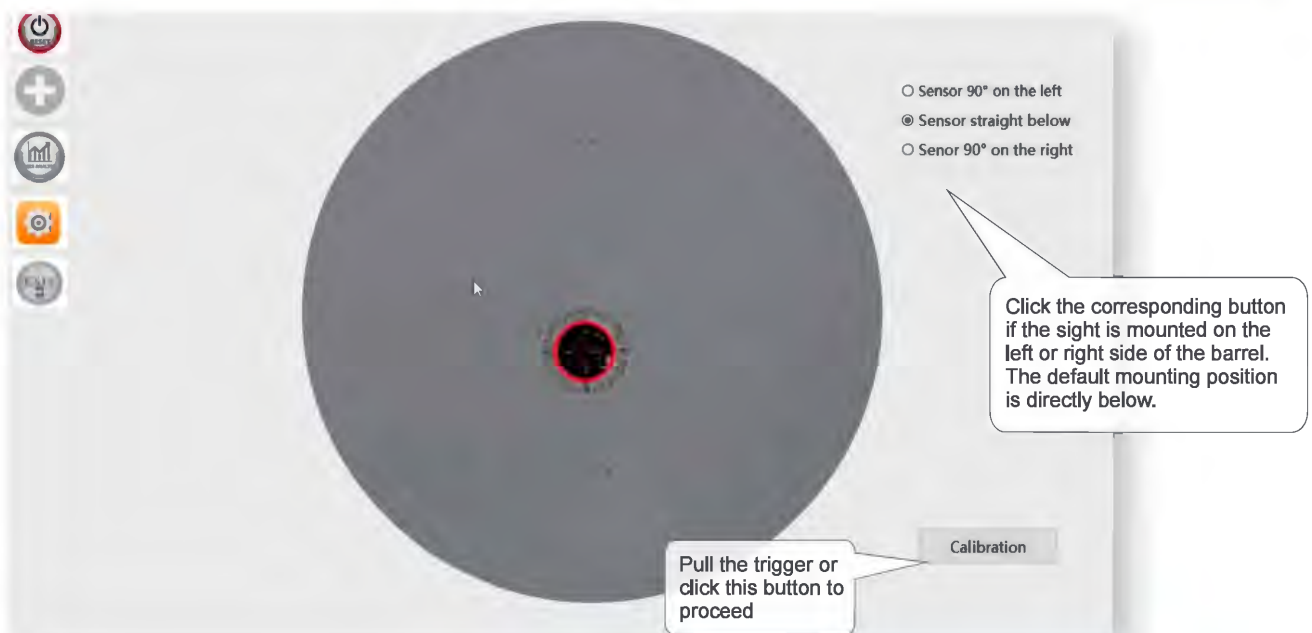




## Set sensitivity



## Optical sensor calibration



Aim at your target. Once ASAFA recognizes it, a red circle will appear around the target. Press the trigger to shoot.

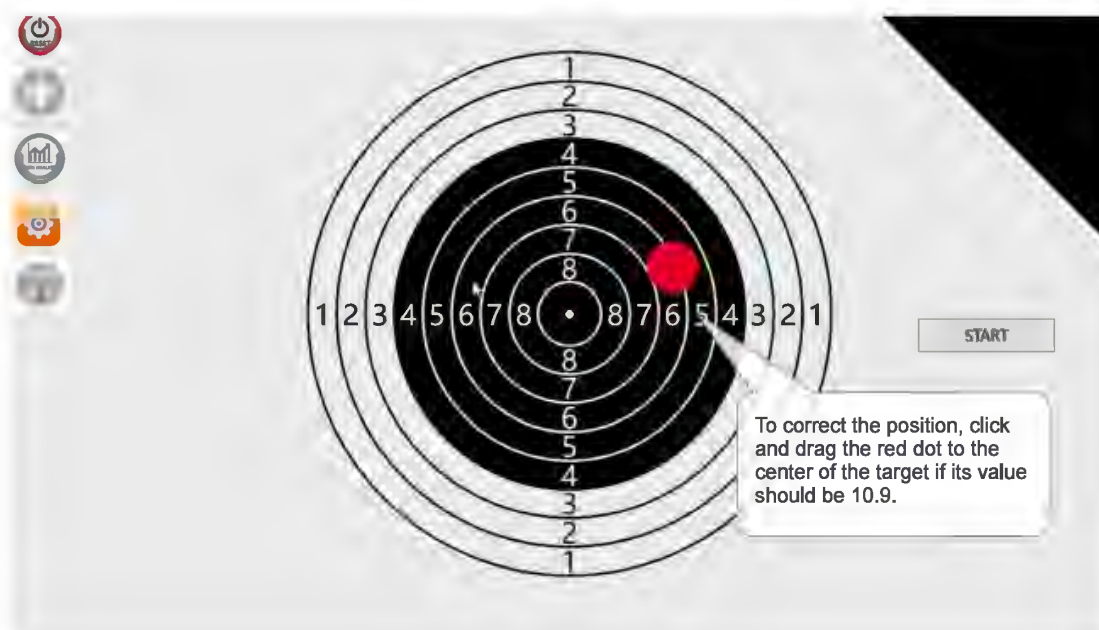
If the red circle moves outside the camera's field of view, reacquire your target by aiming until the circle reappears.

1, Return to Page 4.

2, Adjust the screw to enable vertical movement of the optical sensor.

Attention: No left-right adjustment is necessary.

## Calibrating



## Calibrating Shooting Results



## Calibrating Shooting Results

	Result	Time	Speed	Directio
20	6.8	3.1	460.3	↘
21	9.0	7.6	201.3	↘
22	51.7 (10)			
23	9.8	4.4	6.8	↓
24	10.2	5.0	4.7	↘
25	10.4	10.0	1.9	↑
26	10.4	4.4	12.4	→
27	0.0	10.0	2.7	✓
28	9.8	1.7	7.0	↓
29	10.3	8.0	2.7	↘
30	2.6	5.4	11.3	→

After moving, click the OK button. The sensor has been calibrated. This adjustment will apply starting from your next shot.

## Group interface

Click this Group button

	R	T	S	D
1	8.0	4.333	557.8	↘
2	8.7	5.100	63.0	→
3	5.3	2.400	40.8	↘

Warning: Are you sure you want to start new group?

A selection popup will appear

Calibration



## Statistics interface



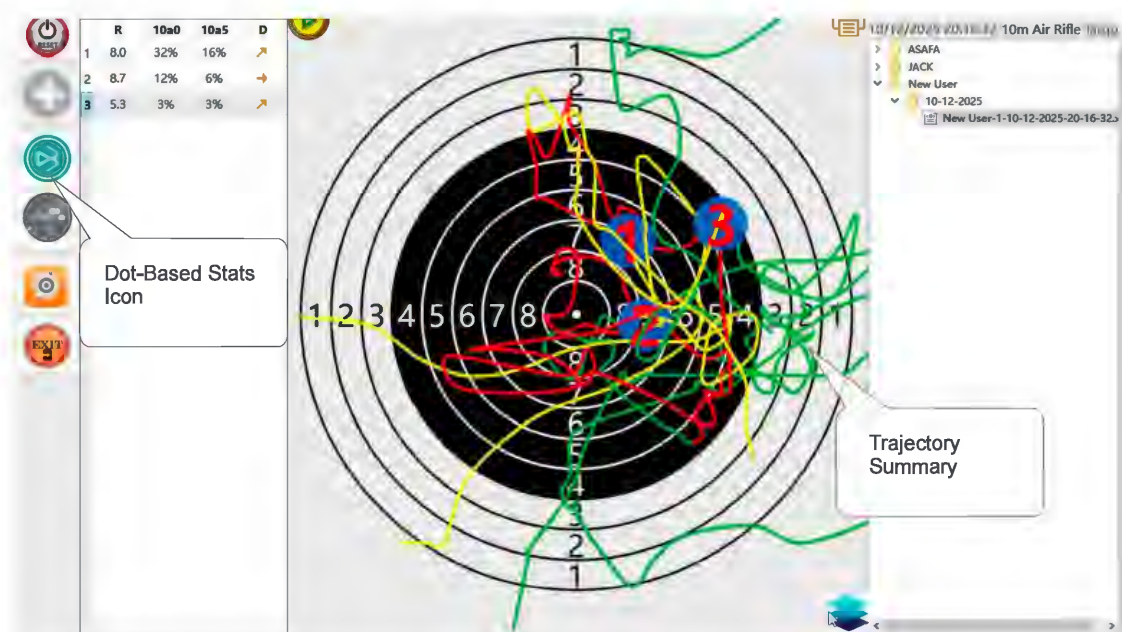
## Statistics interface



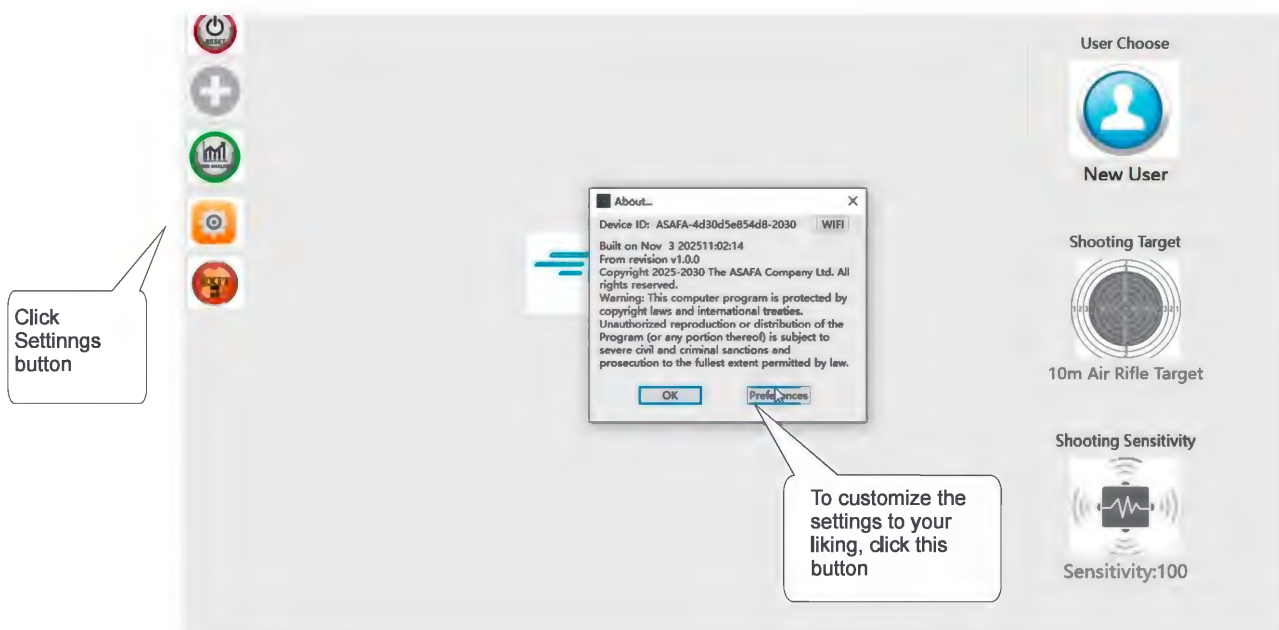
## Statistics interface



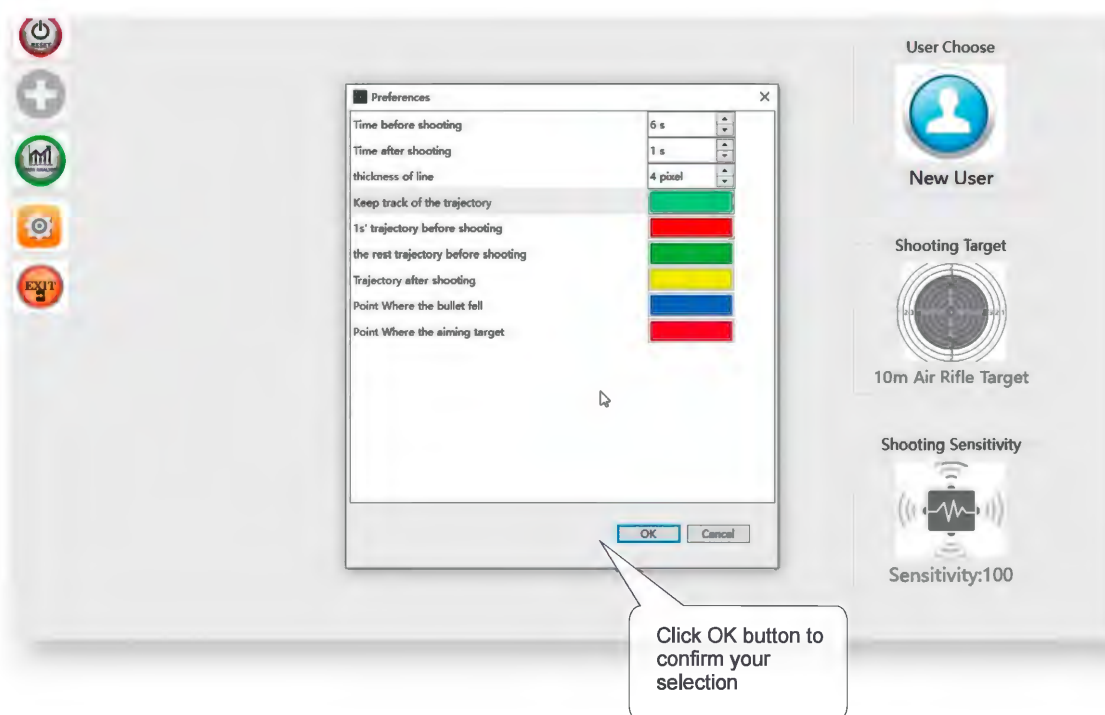
## Statistics interface



## Settings



## Settings



## Warrenty

This two-years limited warranty covers manufacturing defects in your electronic product under normal use. We will repair or replace defective components at our discretion. This warranty does not cover damage from accidents, unauthorized modifications, or improper use. The original proof of purchase is required for all service.

## Care

Use dry soft cloth to clean the body of the sensor. To remove heavy dirt you can use a cloth with light solution of soap or detergent.

Use special optic wipes to clean the sensor's lens.

Never use paint thinners or gasoline to clean the sensor or the accessories.

## Specifications

Sensor size (including battery box):	56.5 x 51.5 x 27 mm
Sensor weight:	66 g.
Available connection type:	Wi-Fi (2.4 GHz, bandwidth 20 MHz)
Operating temperature range:	from -20 to +45° C

\*The manufacturer assumes the right to implement changes that will not lead to a deterioration in the quality of the system's functionality at own discretion and without additional notifications within or outside this manual.



**ASAFA**